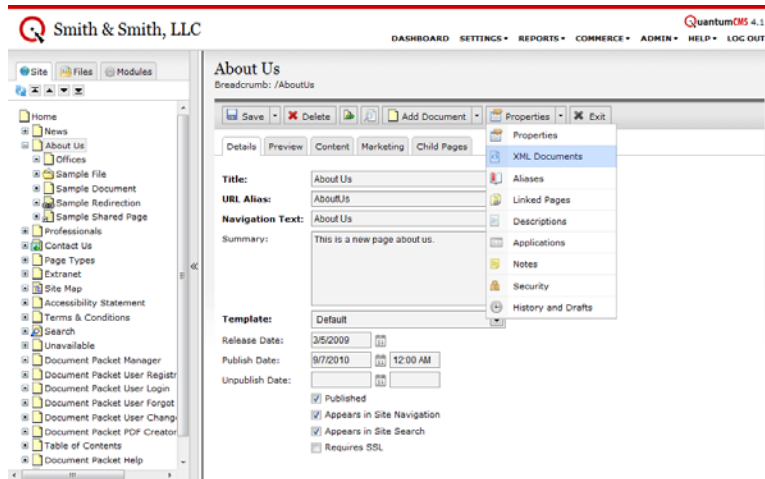


Adding an XML Document

XML may be used by page templates or custom applications in a variety of ways. Consult your custom documentation for instructions specifically for your site.

Step 1: Using the Navigation Tree, access the page where you wish to add an XML Document.

Step 2: Click the arrow next to the **Properties** button and select “XML Documents” from the menu.



Step 3: Click the **Add** button. Enter a *Name* and the appropriate XML in the *Document* text box. Press the **Save** button when complete.

