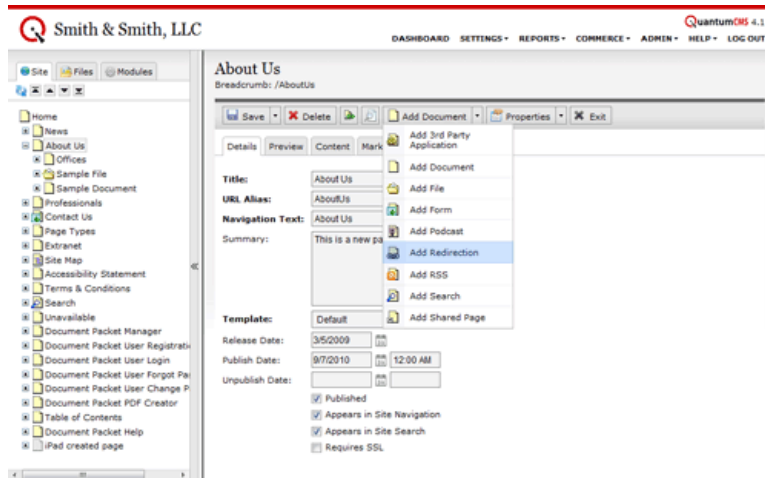


Adding a Redirection Page

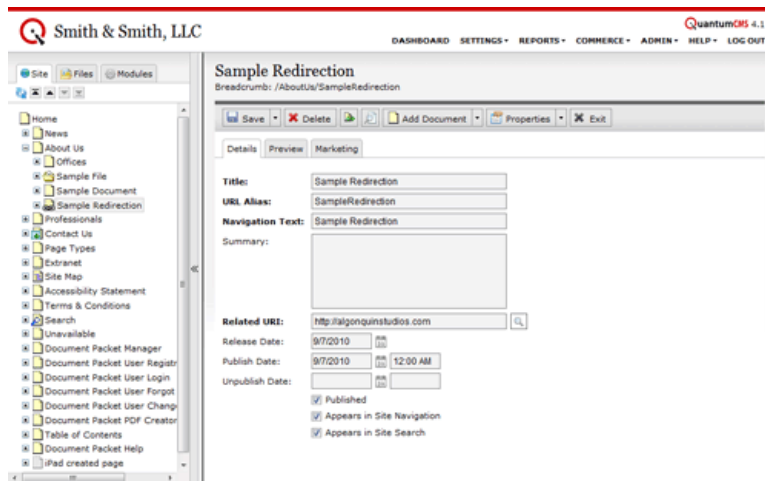
The redirection page type allows you to create a page within your site that will move a user to another page -- either on your site or another site. The redirection page itself never draws since it immediately moves a user to the address specified when creating the page.

Step 1: Using the Navigation Tree, access the section of the site where you wish to add the new page.

Step 2: Click the arrow next to the **Add Document** button and select "Add Redirection" from the menu.



Step 3: Fill out the details and select the destination page.

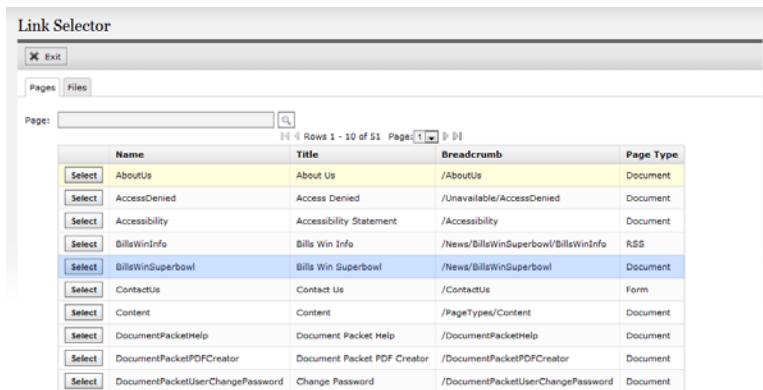


Details Overview:

- *Title*: used in searches and appears as the link text in search results
- *URL Alias*: appears in the browser's address bar
- *Navigation Text*: appears in the in the site's primary and/or sub navigation
- *Summary*: used in searches and appears as the abstract in search results

- *Related URI*: the path to the destination page. This may be a page on the web site or an external web address.

If you do not know the path to a page on your site, you can search for it by clicking the **Search** button.



The Link Selector pop-up will appear. (Note: you may need to have pop-up blockers disabled). Enter keywords in the *Page* field and click the **Search** button.

Click the **Select** button next to the appropriate result.

Step 4: **Publish** and **Save**.