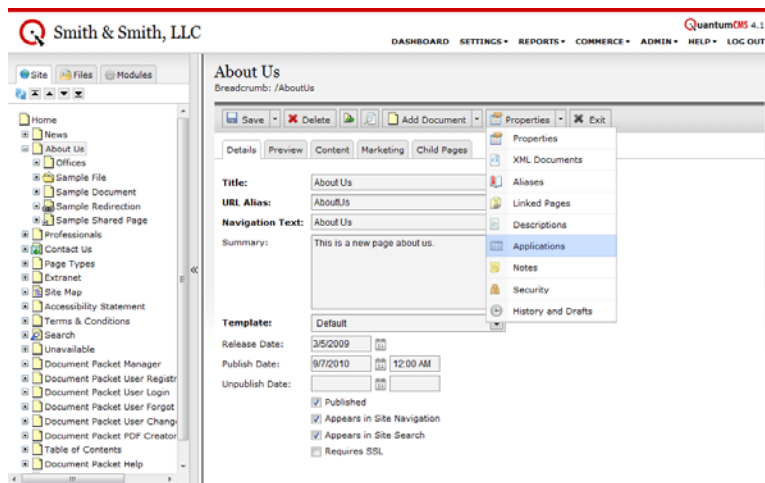


## Adding an Application

Administrators can register custom applications built for QuantumCMS. These applications can then be attached to an individual page by adding them through a page's Applications section. Alternatively, an application can be configured to execute on every page of the site. Consult your custom documentation for specific instructions.

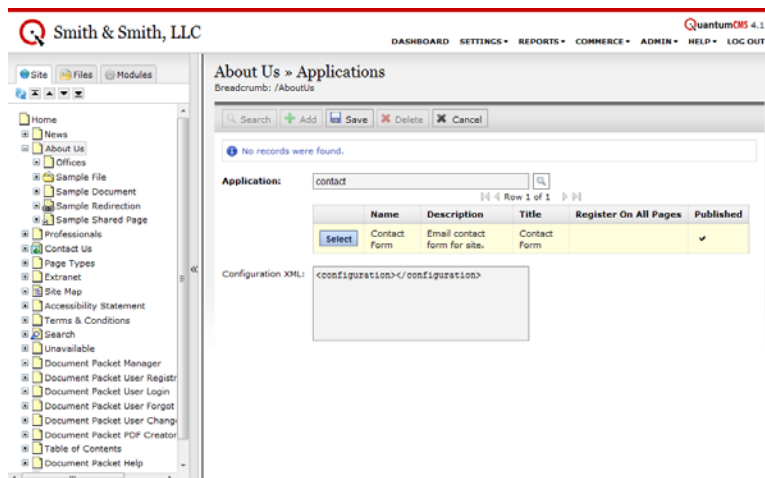
Step 1: Using the Navigation Tree, access the page where you want to add an Application.

Step 2: Click the arrow next to the **Properties** button and select "Applications" from the menu.



Step 3: Click the **Add** button to add a new Application.

Step 4: Enter keywords in the *Application* field to search through applications in the system. Click the **Select** button next to the appropriate result.



Step 5: Enter *Configuration XML* if required. Consult your custom documentation manual for instructions.

Step 6: Press **Save** when complete.

Step 7: Some Applications may require you to add an Application Entry Point in your page content. Within the content editor, paste the following:

```
[ [!-- APPLICATION_ENTRY_POINT[Application Name] -- ] ]
```

“Application Name” should be replaced with the name of the application, such as “Contact Form.”

Eg. [ [!-- APPLICATION\_ENTRY\_POINT[Contact Form] -- ] ]

